

PowerStream Enterprise

driving tomorrow's vision today

System Features

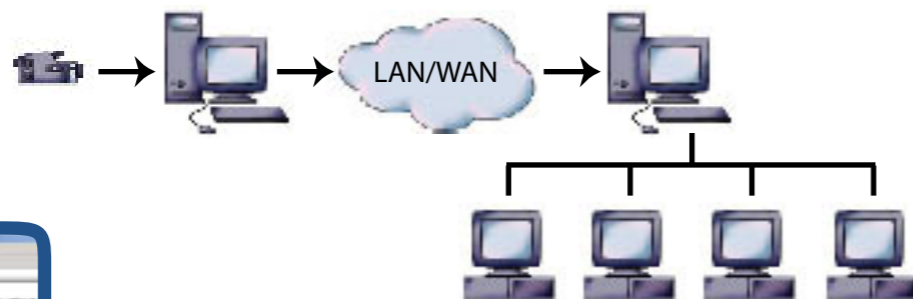
- Suitable for Broadband & ADSL networks
- Supports Multiple Streams
- MPEG4, MPEG 1 and 2 support
- Windows Media Player Receiver
- Microsoft DirectShow compatible
- Unicast, point-to-point, Multicast and Broadcast

PowerStream Enterprise Edition has been designed specifically for system integrators wishing to provide multi-streaming, archiving and compliance solutions for their broadcast, corporate and institutional clients.

The program enables any number of video encoders to be set up, managed and controlled from any point on the client's network or over the web. In addition, the server and receivers can be branded to suit the particular client whether they are a broadcaster or institutional user. A number of designs are included for the user's PC pages to help the styling suit the particular organisation's requirements.

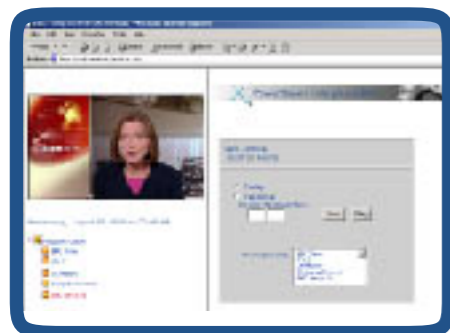
Files can be archived continuously using "chunking". This process creates files of user defined length in either hours, minutes or seconds without disruption of continuity. The file names are automatically generated based on a time-stamp which aids later retrieval. The user defined file length builds in resilience in the storage process.

PowerStream Enterprise Edition is plug-and-play and is designed to work seamlessly with the Breeze Technologies Blue encoders. This enables speedy deployment at minimal development cost for the system developer or integrator.



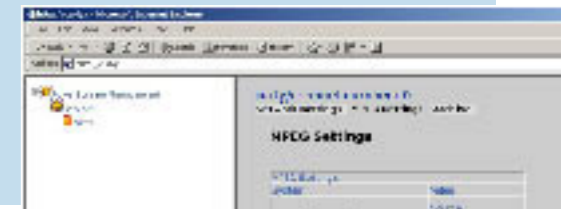
Receiver Manager

The receiver management will be resident at each PC in the network that has the authority to receive the channels. As well as being able to view the selected channel (streams) live the user can also select archived material, and if required the stream's content can be recorded on the local PC.



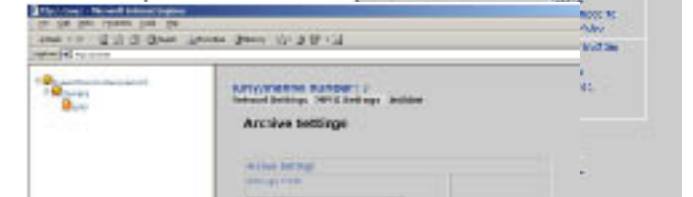
MPEG Settings

Setting the boards for MPEG encoding is simplicity itself, including setting the bit rates most suitable for the application; video input sources (composite, S-video, SDI depending on the BLUE encoding board installed) and video standard (PAL/NTSC).

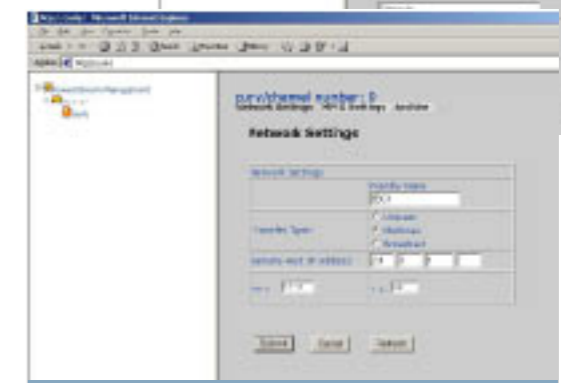


Network Settings

It is at this stage the particular 'channel' is named and addressed enabling easy recognition of channel and source.



Each source can be set to unicast, multicast or broadcast transmission across one or more networks and in any format (MPEG1, 2 or 4).



Archive Settings

Archive settings enable the user to determine the storage path, file name, individual file sizes in hours, minutes and seconds, purge time (total storage time before the archive is overwritten) in hours, minutes and seconds. The system can be set to provide a rolling archive facility. In this way the archived material can be automatically updated at the end of the desired period, for example every 36 hours.

These parameters can be set for each channel.



DIGIVISION

Via C. Poerio 29
20129 Milano
Italy

Tel: +39 02 29513323

email: vendite@digivision.it